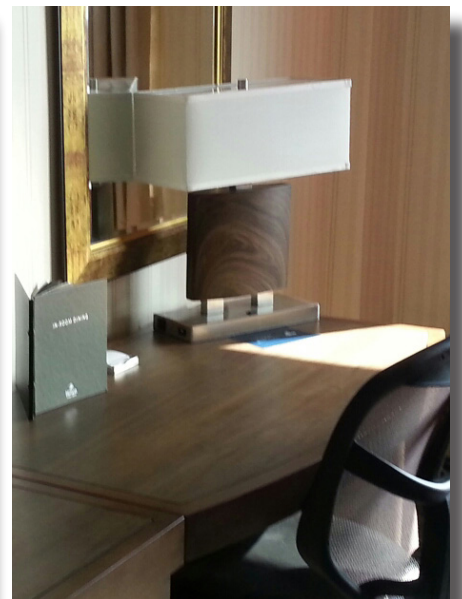
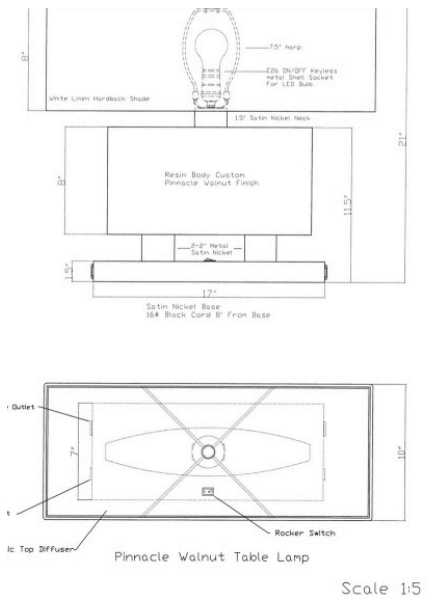




# Custom Design and Value Engineering



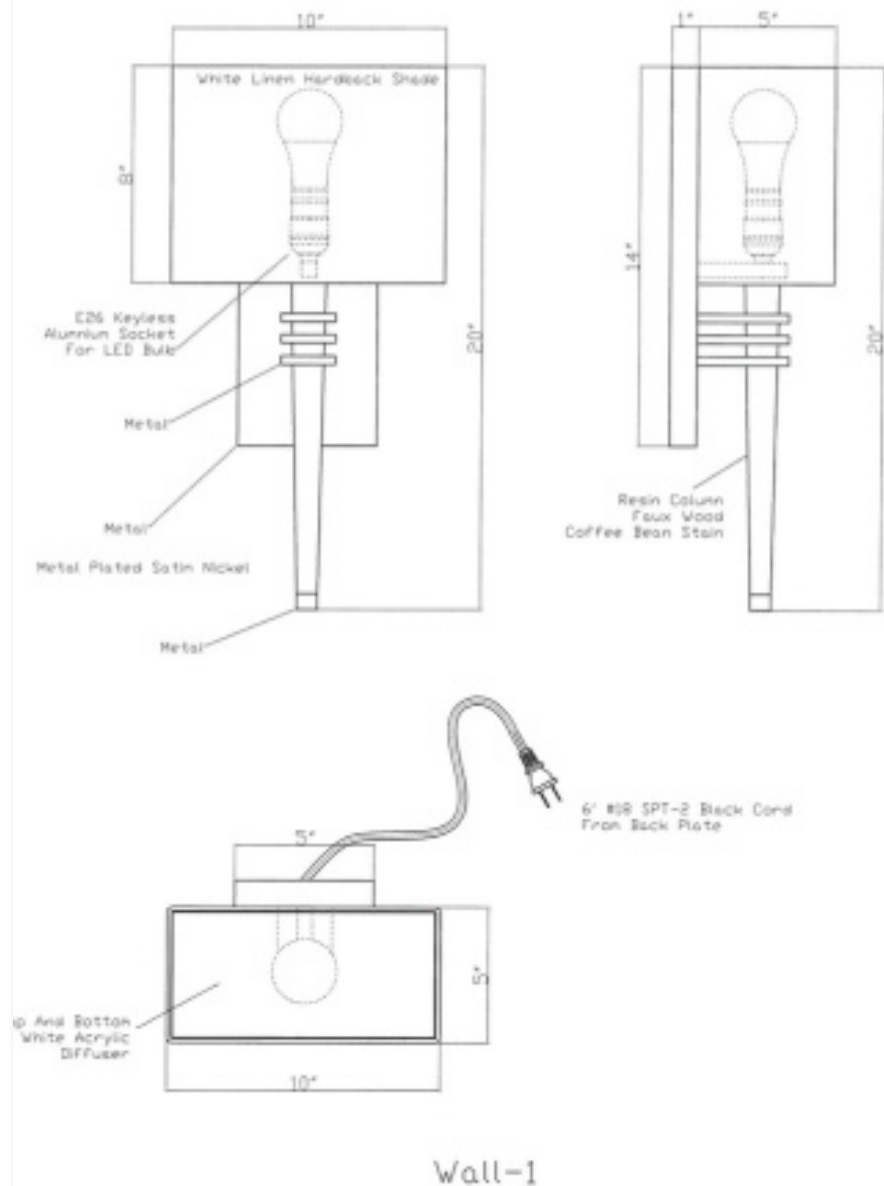
Medallion Lighting has over 35 years of experience designing, sourcing, purchasing, inspecting and importing lighting products. We have the knowledge and dedication to make your vision and designs meet the needs of your project!

# Original Concept



**New Wall Sconce**  
**Overall Dimensions: 10" W x 20" OAH x 6" Projection**  
**Metal Finish: Plated Polished Nickel**  
**Resin Column Finish: Faux Wood Coffee Bean Stain**  
**Half Rectangular Shade: 5x10 - 5x10x8 White Frosted Acrylic**  
**To Accommodate (1) E-26 120VAC 9W Non-Dimmable A-19 LED Bulb**  
**(1) E-26 On / Off Keyless Metal Shell Socket, 100W Max Label**  
**Direct Mount Hardwired, 12" Black/White/Ground Wire Leads Exit**  
**Back of Fixture**  
**UL Listed For Dry Locations**

## CAD Drawing



# Finished Product



# Original Concept



## Coffee Bean Table Lamp

Coffee Bean Table Lamp

Overall Dimensions: 20.5" H

Metal Finish: Matte Black PDCT Base

Metal Finish: Plated Satin Brass Accents

Resin Body: Custom Coffee Bean Finish

Shade: Black Linen, Hand-Tucked

Diffuser: White Acrylic Top Diffuser

To Accommodate (1) E-26 120VAC 9W Non-Dimmable A-19 LED Bulb

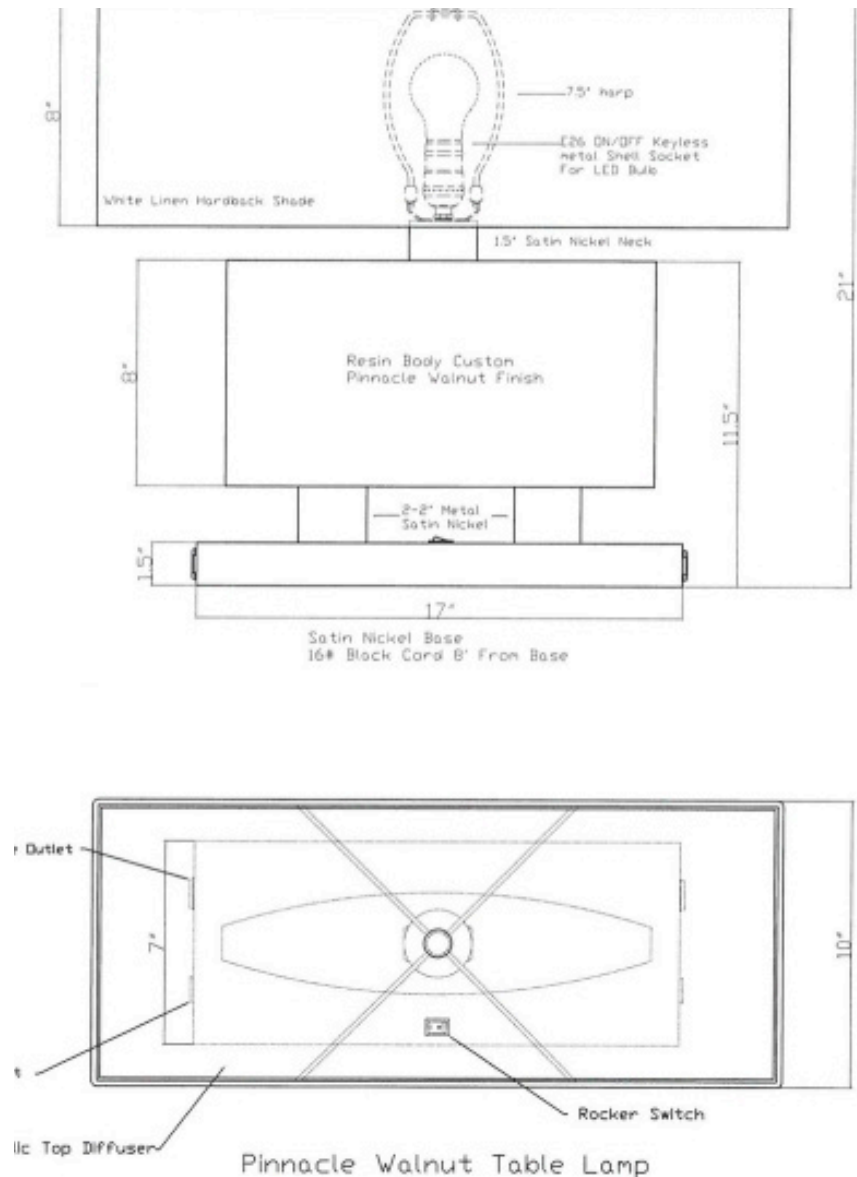
(1) E-26 On / Off Keyless Metal Shell Socket, 100W Max Label

On / Off Black Rectangular Rocker Switch @ Socket

Weighted Base, Black Felt Pad @ Bottom

8' - 0" 18/2 SPT 2 Clear Silver Cord w/ Molded-On 2-Prong Plug  
UL Listed For Dry Locations

## CAD Drawing



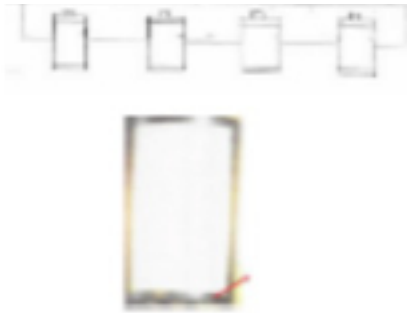
Scale 1:5



# Finished Product

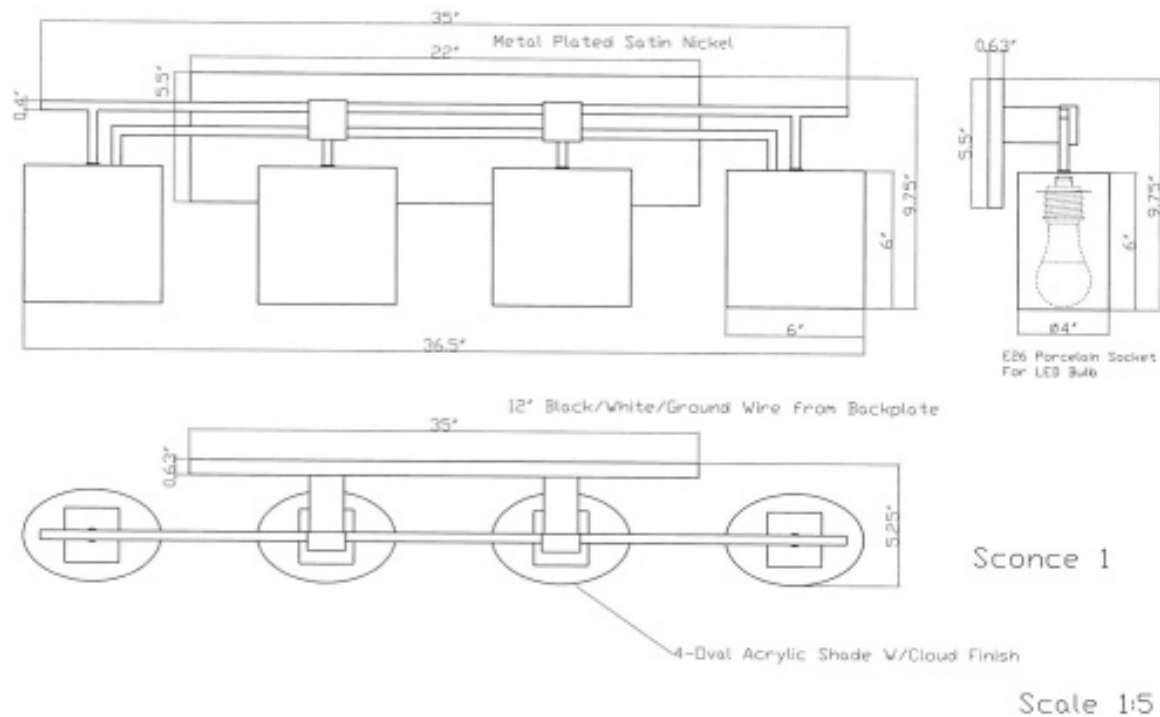


# Original Concept



Overall Dimensions: 38" W x 8" H  
Metal Finish: Plated Polished Nickel  
Cylinder Shade: 4" W x 6" H, Gloss White Opal Glass  
To Accommodate (4) E-26 120VAC 9W Non-Dimmable A-19 LED Bulb  
(4) E-26 On / Off Keyless Metal Shell Socket, 100W Max Label  
Direct Mount Hardwired, 12" Black/White/Ground Wire Leads Exit  
Back of Fixture  
UL Listed For Dry Locations

## CAD Drawing



## Finished Product

